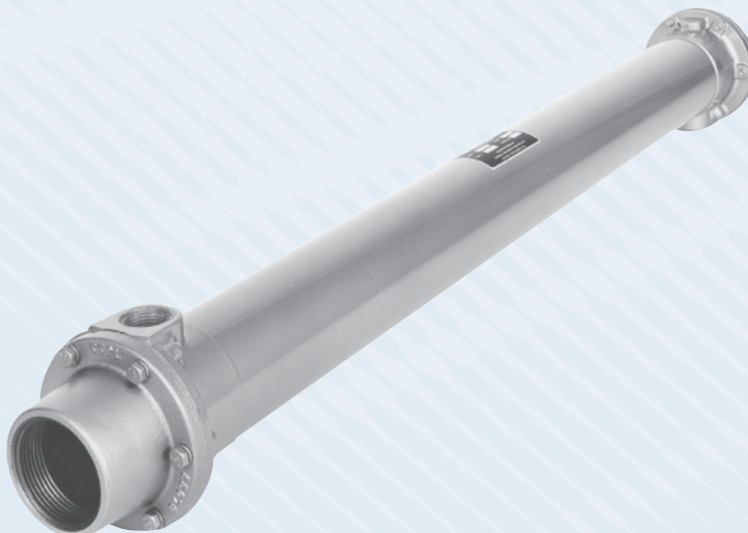


COMPRESSED AIR COOLING | Air AB Series

COPPER TUBE CONSTRUCTION

Features

- **Compressed Air and Gas Aftercoolers**
- **For Water to Air Cooler**
- All Brass Hubs and Shell Assemblies:
Reduce or Eliminate Galvanic and
Other Types of Corrosion
- Copper Nickel Tubes Available
for Sea Water Service



Ratings

Maximum Operating Pressure

Tubes 250 PSI

Shell 250 PSI

Maximum Operating Temperature 350° F

Materials

Tubes Copper

Shell Brass

End Hubs Brass

End Bonnets Cast Iron

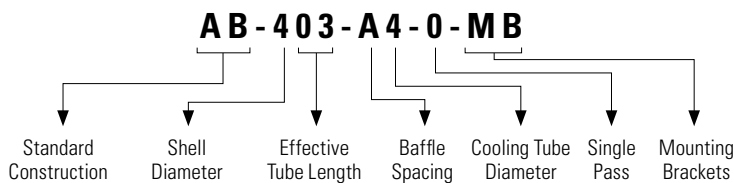
Baffles Brass

Mounting Brackets (optional) Steel

Gaskets Nitrile Rubber

Nameplate Aluminum Foil

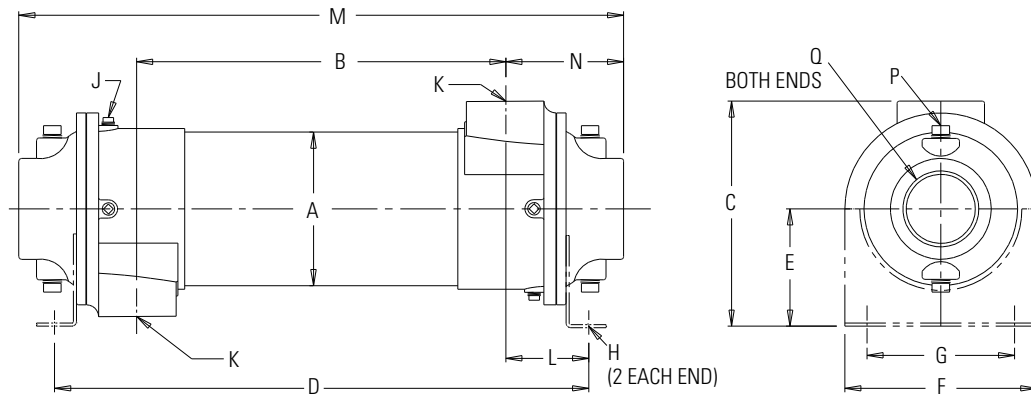
Unit Coding



How to Order

<div>AB</div>	-	<div></div>	-	<div></div>	-	<div>0</div>	-	<div></div>		
Model Series		Model Size Selected		Baffle Spacing		Tube Diameter Code		Tubeside Passes		MB or Blank
AB		403		A - 1.125		4 - 1/4"				
		404		B - 2.25		6 - 3/8"				
		405		C - 4.5						
		705		D - 9.0						
		1006								
		1206								
		1207								
		1606								
		1607								
		1608								

Dimensions



Model	DIA A	B	C	D*	E*	F*	G*	H*	J NPT	K NPT	L	M	N	P NPT	Q NPT	Weight (lbs.)
AB-403-A4-0	2.12	25.62	3.50	29.06	1.94	2.62	1.76	.41 Dia.	—	.50	1.72	33.36	3.87		1.50	13
AB-404-A4-0		34.62		38.06								42.36				16
AB-405-B4-0		43.62		47.06								51.36				18
AB-705-B4-0	3.66	43.00	6.25	48.38	3.62	5.25	3.00	.44x 1.00	(2) .38	1.00	2.69	50.40	3.70		2.50	40
AB-1006-B6-0	5.12	51.50	7.38	57.62	4.00	6.75	4.00					59.60				80
AB-1206-C6-0	6.12	50.50	8.81	57.38	4.75	7.50	5.00	.44x .88	(6) .38	1.50	3.06	60.25	4.88		3.00	130
AB-1207-C6-0		59.60		66.38								69.25				150
AB-1606-C6-0	8.00	49.60	12.13	58.38	6.50	8.62	7.00	.44x 1.00	(6) .38	2.00	3.44	62.62	6.52	(4) .50	5.00	259
AB-1607-D6-0		58.60		67.38								71.62				270
AB-1608-D6-0		67.60		76.38								80.62				315

NOTE: We reserve the right to make reasonable design changes without notice. All dimensions in inches.

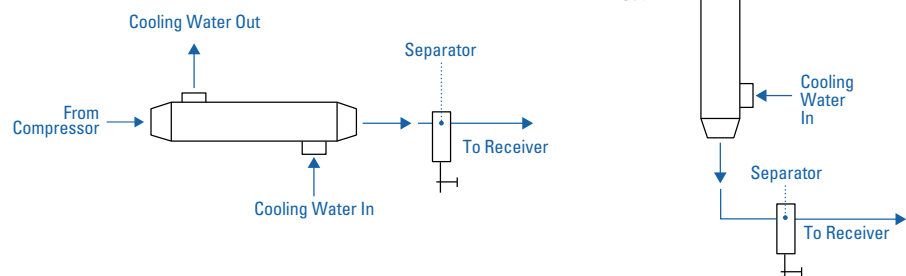
Capacity Selection

Model	2-Stage Recip 250°F Inlet Air		Rotary Screw 200°F Inlet Air	
	SCFM Capacity* in Tubes	Δ P, PSI, at Rated Capacity	SCFM Capacity* in Tubes	Δ P, PSI, at Rated Capacity
AB-403-A4-0	40	0.1	58	0.1
AB-404-A4-0	80	0.3	110	0.6
AB-405-B4-0	150	1.2	205	2.0
AB-705-B4-0	310	1.0	439	1.6
AB-1006-B6-0	440	0.3	654	0.5
AB-1206-C6-0	640	0.3	955	0.6
AB-1207-C6-0	1250	1.1	1690	1.9
AB-1606-C6-0	1600	0.5	2280	0.9
AB-1607-D6-0	2100	1.0	3080	1.7
AB-1608-D6-0	2800	1.6	3170	2.0

*Based on ambient air at 60°F, 14.7 psia, and 50% relative humidity. Compressed air cooled to within 15°F of inlet water temperature. Water flow rate 3 GPM per 100 SCFM air flow. For single stage compressor type, 300°F inlet, use 2-stage SCFM capacities with a 15% reduction.

Piping Diagrams

Thermal Transfer Aftercoolers can be mounted in either of the positions shown. Separators should be used as shown. Consult factory for separator recommendations.



Selection Example

Specified

Two stage compressor with a 340 SCFM air delivery at 100 psig and a 250°F discharge temperature. Maximum allowable pressure loss is 2 psi. Water flow rate to be determined.

Solution

STEP 1 From the 2-stage compressor column select model **AB-1006-B6-0** with 440 SCFM capacity.

STEP 2 To determine Δ P: Read column to right of SCFM capacity selected.
Δ P = 0.3 PSI

STEP 3 Water flow rate required
340 SCFM x .03 = 10.2 GPM